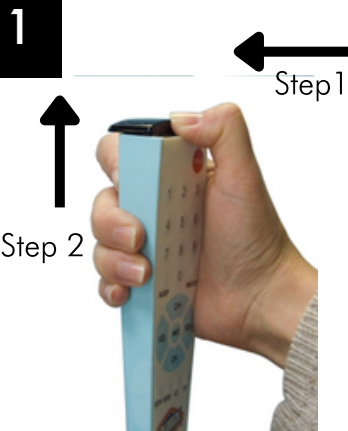


# INSTRUCTIONS FOR CR2M

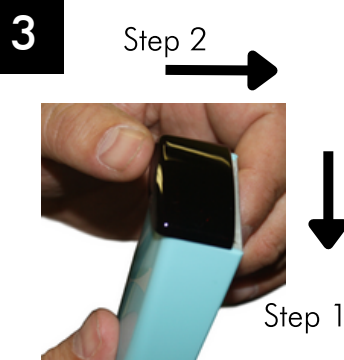
## Battery Installation



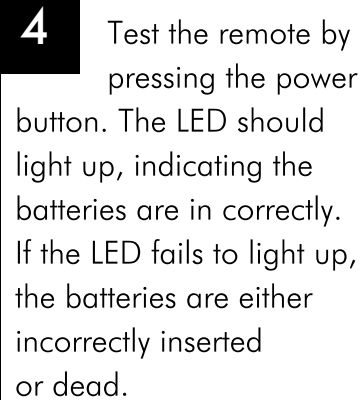
Looking at the keypad, slide the dark lens cover away from you (STEP 1) and lift the lid from the back (STEP 2).



Install 2 AAA batteries. Make sure the + and - symbols on the metal hinge of the battery compartment correspond with the + and - end of each battery.



With the keypad facing away from you, close the cover by gently pressing it down (STEP 1) and sliding it until it aligns with the front (keypad) of the device (STEP 2).



Test the remote by pressing the power button. The LED should light up, indicating the batteries are in correctly. If the LED fails to light up, the batteries are either incorrectly inserted or dead.

The optional screw for the battery compartment is in the bag with the remote.

## TV Only Setup Instructions

### Important For Sonifi®, Lodgenet® or OnCommand® Systems And Cruise Ship TV Systems Skip To Page 2

With the TV ON, point the remote at the TV's front panel. (For best results, stand at least 5 feet from the TV)

Press and firmly hold down the SETUP button. Do not release. The LED on the remote will blink once and then after 7 seconds begin searching for your TV's code. The LED on the remote will blink every few seconds as it searches. The moment your TV shuts OFF, release the SETUP button to lock in the code.

#### Testing The Remote

Test power, volume, and channel functions. If all work correctly, setup is complete. If not, you may not have an exact code match for your TV model. Repeat the code search procedure above, it will begin where it left off.

## Troubleshooting TV Only Setup

Important: If you think you missed the TV code or you intend to use the remote on a different brand of TV, reset the remote to the TV factory default and restart the TV code search: Press and hold the SETUP button down, then press and hold the CC button down simultaneously until the red LED light blinks quickly 3 times, then release both buttons. You have now reset the code list back to the beginning. Then see TV Only Setup Instructions above.

## **Sonifi® Systems ( Lodgenet® OnCommand®) Setup**

Press and Hold Down both the SETUP and POWER buttons at the same time, until the LED light turns on and remains ON.

Enter the two digit direct access number for your TV Systems from the list below; the LED light will then turn off confirming it was accepted.

Test the remote to ensure it operates all your TV System's features. If not, try the next code listed.

### **Codes For Sonifi® Lodgenet® or OnCommand® Systems**

The most common code is 02, you can also try 06, 05, 07, 08 or 10, 01, 03, 04 and 11

### **Codes For Sonifi® Systems with Samsung® IPTV**

The code is 13.

## **Cruise Line TV Systems Setup**

Press and Hold Down both the SETUP and POWER buttons at the same time, until the LED light turns on and remains ON.

Enter the two digit direct access number for your TV Systems from the list below; the LED light will then turn off confirming it was accepted.

Test the remote to ensure it operates all your TV System's features. If not, try the next code listed.

### **Codes For Cruise Line TV Systems**

The codes are 14, 15, 16, 17, 21, 02, 05, or 06

## **To Return Remote To TV Only Mode Or Return To The Factory Default**

Press and hold the SETUP button down, then press and hold the CC button down at the same time until the red LED light blinks quickly 3 times, then release both buttons. You have now reset the code list back to the beginning. For TV-only operation see Page 1 for TV only setup or see Sonifi and Cruise Line setup above.